



# Software Manual



# Contents

1 Software Installation.....	1
1.1 Overview.....	1
1.2 Software Installation.....	1
2 Introduction To Basic Function.....	5
2.1 Login System.....	5
2.2 CMS Operating Interface.....	5
2.2.1 Operating Zone.....	6
2.2.2 Menu.....	6
2.2.3 Shortcut Toolbar.....	6
2.2.4 Screen Division And Polling Tool Bar.....	7
2.2.5 Zoom Toolbar.....	8
2.2.6 Message Prompt Box.....	8
3 Configuration Management.....	10
3.1 Device Management.....	10
3.1.1 Zone Add, Modify, Delete.....	10
3.1.2 Manually Add.....	10
3.1.3 Online Device Detect.....	11
3.1.4 Front-end Device Parameter Settings Management.....	12
3.2 Schedule Configuration.....	13
3.3 Alarm Linkage Plan Configuration.....	15
3.4 User Management.....	16
3.5 Configuration Lead-in And Lead-out.....	18
3.5.1 Configuration Lead-in.....	18
3.5.2 Configuration Lead-out.....	18
3.6 Group Management.....	18
4 Tools.....	21
4.1 Log Management.....	21
4.2 Bacth Setup.....	21
4.3 Remote Replay.....	22
4.3.1 Remote Video Retrieval.....	22
4.3.2 Remote Video Control.....	23
4.4 Version Information.....	23
5 Picture Preview.....	24
5.1 Watching Video.....	24
5.1.1 Free View Model.....	24
5.1.2 Right Menu.....	25
5.1.3 Play In Groups.....	25
5.1.4 Polling Play In Groups.....	26
5.2 Manual Capture And Record.....	26
5.2.1 Manual Capture.....	26
5.2.2 Manual Record.....	26
6 LNK Tools.....	27

6.1 Status Of Record Channel.....	27
6.2 Record Playback.....	27
6.2.1 Introduction Of Play Back Interface.....	27
6.2.2 Record Search.....	28
6.2.3 Playback Control.....	29
6.3 Local Configuration.....	29
6.4 Log out.....	31
7 Remote Configuration.....	32
7.1 Interface of Remote Configuration.....	32
7.2 System Management.....	32
7.2.1 General Settings.....	32
7.2.2 Internet Set.....	33
7.2.3 User Management.....	33
7.3 Channel Management.....	34
7.3.1 Channel Configuration.....	34
7.3.2 Preview Configuration.....	35
7.4 Record Management.....	35
7.5 System Maintenance.....	36
7.5.1 Disk Management.....	36
7.5.2 Equipment Upgrade.....	36
7.5.3 Restore Default.....	37
7.5.4 Blog Info.....	38
7.5.5 Version.....	38

# 1 Software Installation

---

## 1.1 Overview

This software is a powerful Central Control Software. The system is distributed framework with more windows, multiple previews, video recording, local and remote review, log query, alarm playback and remote configuration. The user interface is friendly; operation is simple and it is convenient to conduct authority settings.

The software can be applied on the connection of different type or model devices( For example, NCV, IPCAM etc.). This manual focuses on the software operation and takes NVR's connection as the example. As for the specific device's function setting, please check the relative instruction.

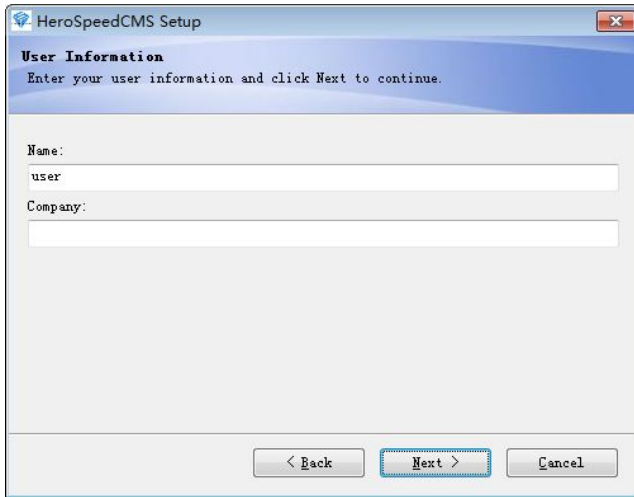
This manual is for the person who is in charge of plan, execution or review the monitor, and the hardware installation. So the person should be equipped with basic operation knowledge and experience of the relative devices( such as NCV, IPCAM etc.)

## 1.2 Software Installation

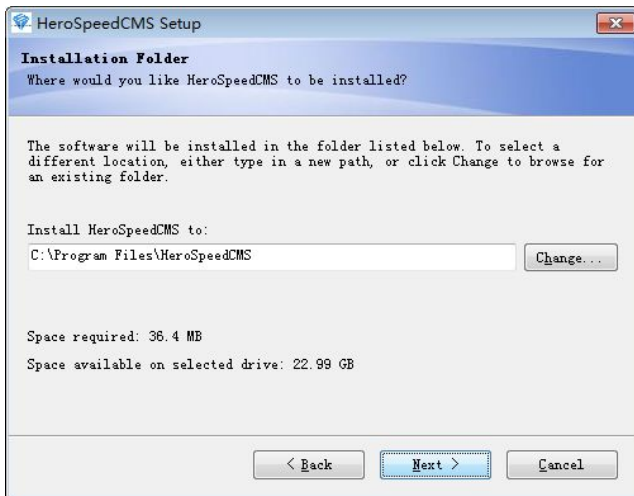
Find out and double click the file "HeroSpeedCMS.exe", and then the dialog pops up as below.



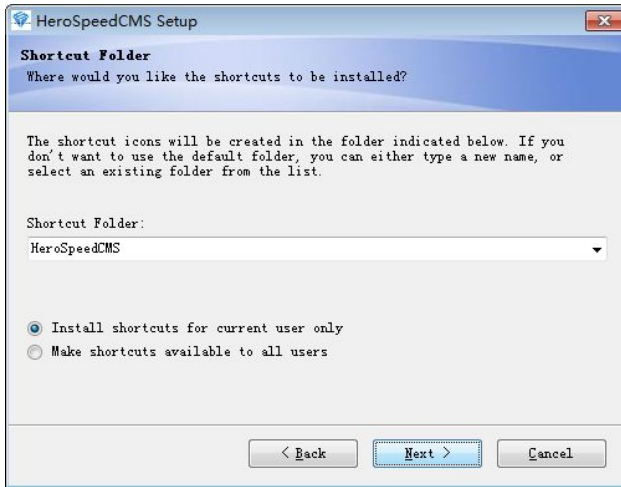
(1) choose the system language you need, click "Next", the dialog appears as below.



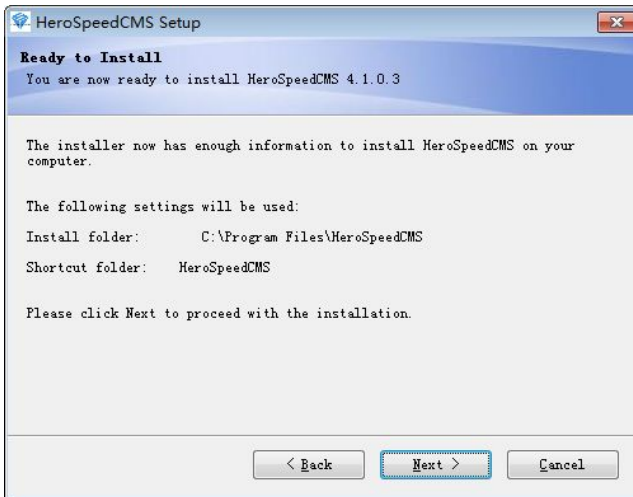
(2) Input the user information, click "Next", the dialog appears as below.



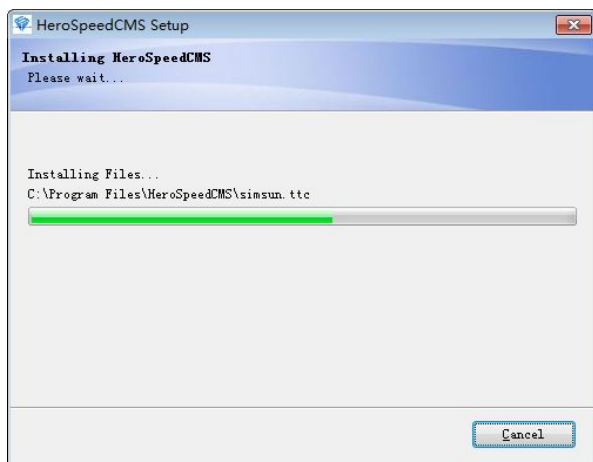
(3) Click "Change", select the install location, the default location is "C:\Program Files\HeroSpeedCMS", click "Next", choose the type, see the below picture.



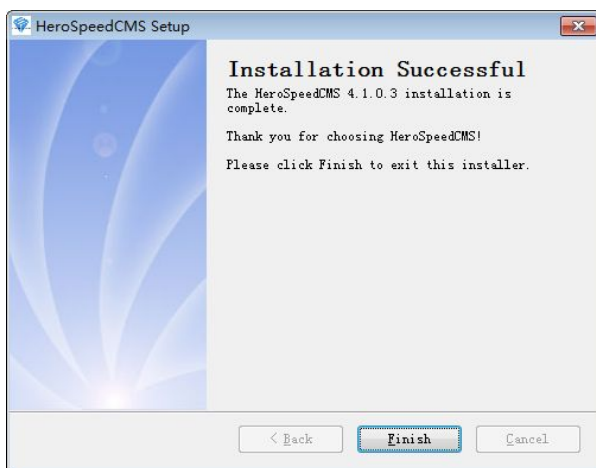
(4) Click "Next", start to install CMS, the dialog appears as below.



(5) Click "Next" to start installing. The progress bar as below.



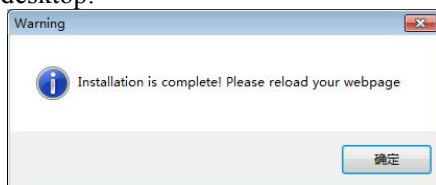
(6) Click "finish" to finish the installation.



(7) After finish, it will remind you "Initialization completed", then the




appears on the desktop.



# 2 Introduction To Basic Function

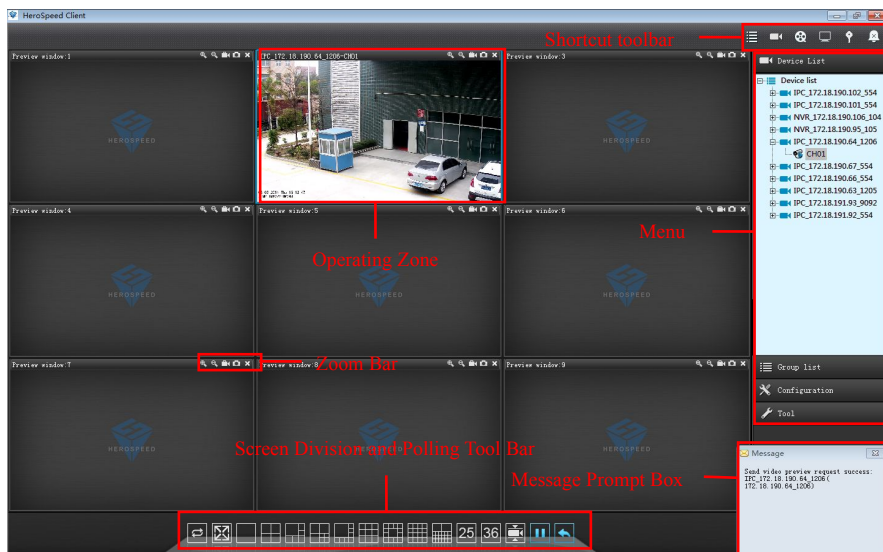
## 2.1 Login System

After finish the installation double click  on the desktop. The log-in screen appears. In the first log-in, you should register a user, the user is the system administrator with all the authority. You should set the user name and password (such as, user name: admin, password: admin).



## 2.2 CMS Operating Interface

After finish the user name and password, click "OK", then enter the Operating Interface as below picture.



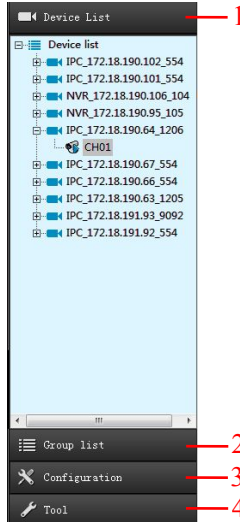


### 2.2.1 Operating Zone

During the visual preview, the user can do it in the operating zone. Click the right mouse button, you can conduct the configuration of system video play.

### 2.2.2 Menu

The user can choose to set single menu and its sub-menu in the MENU.



No.	Name	Note
1	Device List	Device List, see chapter 5.1
2	Group List	group list, see chapter 5.1
3	Configuration management	Device Management, Time-table configuration, Linked preplan configuration, user management, configuration lead-in & lead-out, Group management, see chapter 3
4	Tool	Log Query, Batch setting, Version information, see chapter 4

### 2.2.3 Shortcut Toolbar

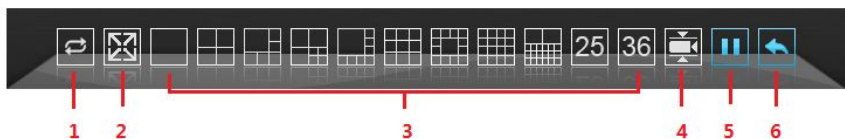
Through the shortcut toolbar, the user can conduct device management, video replay and setting local configuration etc.



No.	Name	Note
1	Device Management	Include mobile detect alarm, screen mask alarm etc., see chapter 3.1
2	Video Channel	Present all the running video channel, see chapter 6.1
3	Video Replay	Pop up local replay of common video and alarm displayer, see chapter 6.2
4	Basic Configuration	The modify of parameter and password of the system configuration, see chapter 6.3
5	Log Out	The user's log out, see chapter 6.5
6	Alarm Configuration	Equipped with terminal alarm function

### 2.2.4 Screen Division And Polling Tool Bar

The user can choose the quantity of monitoring channels and to set the display mode.



No.	Name	Note
1	Scanning Grade	Scanning real-time and smooth level setting
2	Full Screen	Switch to Full Screen, see chapter 5.1.1
3	Split Screen Control	Multi-screen preview, see chapter 5.1.1
4	Play Mode Switch	Video freely scan mode and video display group polling mode, see chapter 5.1.
5	Polling Pause	During the visual polling, the polling can be paused
6	Polling Recover	During the polling pause, the polling can be recovered. See chapter 5.1.4

### 2.2.5 Zoom Toolbar

By the Zoom Toolbar, the user can zoom preview zone, take video and picture.

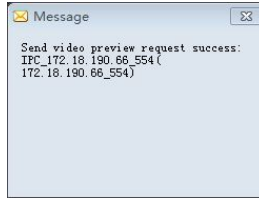


No.	Name	Note
1	Enlarge	Enlarge the place you click on the preview screen, see chapter 5.1.1
2	Narrow	Narrow the place you click on the preview screen, see chapter 5.1.1
3	Video	Record the video, see chapter 5.2.2
4	Picture	Take the picture on the screen, see chapter 5.2.1
5	Shutdown	Shut down the channel, see chapter 5.1.1

### 2.2.6 Message Prompt Box

The message prompt is as the below picture. During the configuration and operation, the system will record operating information automatically and prompt with Message

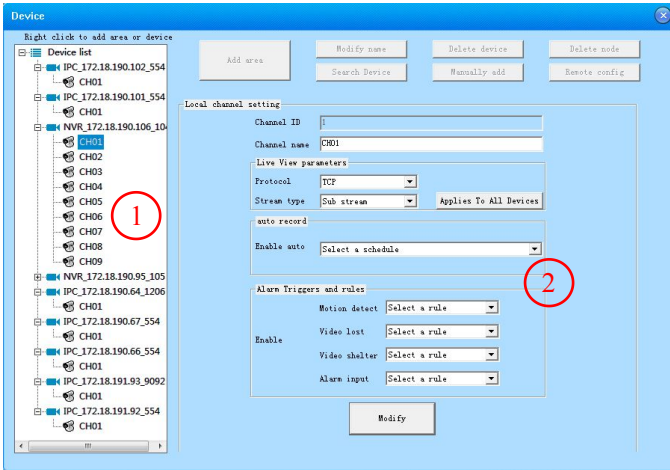
## Prompt Box.



# 3 Configuration Management

## 3.1 Device Management

Before the software operation, you should add the device and make the configuration. Click the Log Query on "Tool" of menu, then the device management interface comes out as below picture:



Zone	Note
①	Zone, device list
②	Device and channel change

### 3.1.1 Zone Add, Modify, Delete

Right click on the junction point of zone, choose the "Add Zone" on the pop-up menu, then fill in the Zone Name, then click to finish the zone adding.

**Note:** right click the zone, "Delete Junction Point", "Modify Name" means to delete the junction point and modify the name.

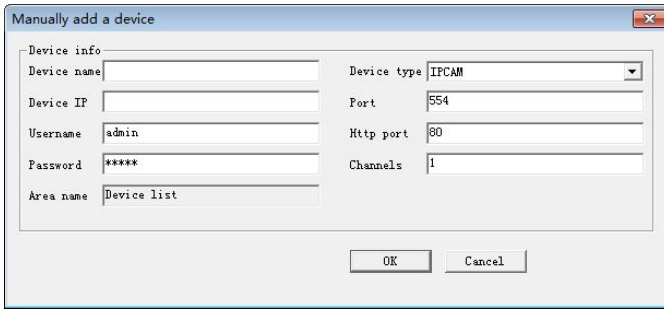
### 3.1.2 Manually Add

Click the "Configuration Management" on the menu, open the window of "Device Management", choose the "Device List", then the sub-menu "Manual Add" of "Add New Video Device", as below picture:

First: Open Add Device window.

Second: Fill the Device Name, Type and IP information. After filling, click to confirm the add.

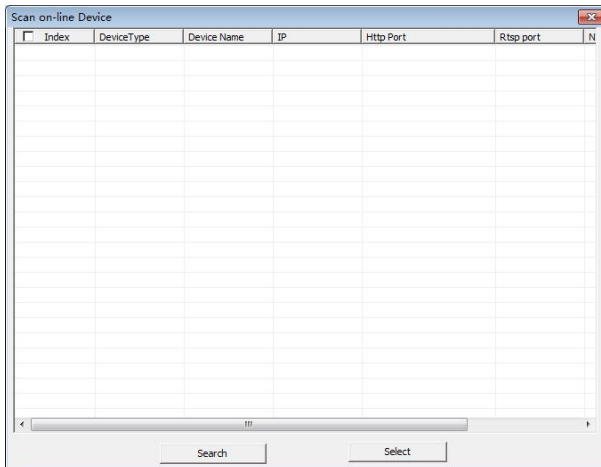
Third: After the add, go back to the main window, now you can double click the device channel to see the video.



- **Device Name:** Randomly fill, just as the device Identifier.
- **Device Type:** You can choose DVS(NVR device choose DVS) or IPCAM.
- **Device IP:** IP address of the video server to be connected.
- **Channel Quantity:** The quantity of video server channels. Maximum is 16.

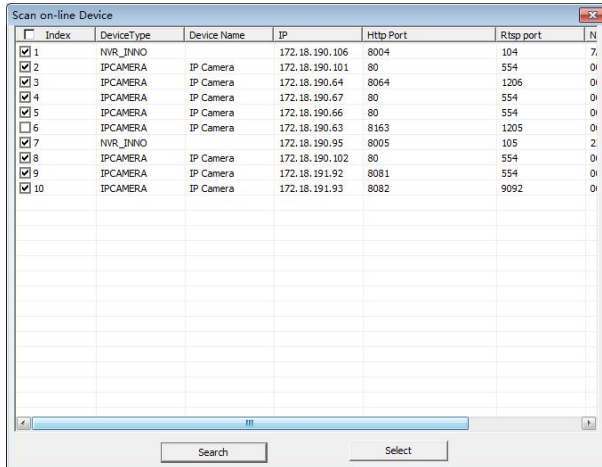
### 3.1.3 Online Device Detect

1. Click the "Configuration Management", open the window "Device Management", choose the "Device List" and right click, then sub-menu "Online Search" of "New Video Device", as the below picture:



2. After the Query, choose the device you need to add and select the

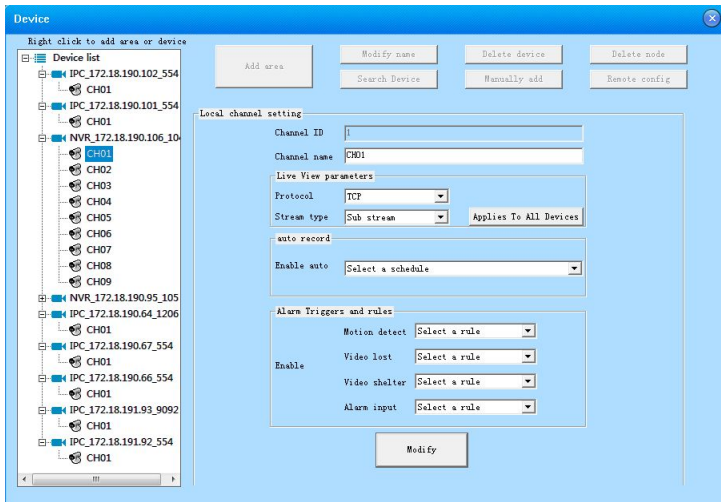
number of the front box, then click the " choose device " to confirm.



<input type="checkbox"/>	Index	DeviceType	Device Name	IP	Http Port	Rtsp port	N
<input checked="" type="checkbox"/>	1	NVR_INVO		172.18.190.106	8004	104	7
<input checked="" type="checkbox"/>	2	IPCAMERA	IP Camera	172.18.190.101	80	554	0
<input checked="" type="checkbox"/>	3	IPCAMERA	IP Camera	172.18.190.64	8064	1206	0
<input checked="" type="checkbox"/>	4	IPCAMERA	IP Camera	172.18.190.67	80	554	0
<input checked="" type="checkbox"/>	5	IPCAMERA	IP Camera	172.18.190.66	80	554	0
<input type="checkbox"/>	6	IPCAMERA	IP Camera	172.18.190.63	8163	1205	0
<input checked="" type="checkbox"/>	7	NVR_INVO		172.18.190.95	8005	105	2
<input checked="" type="checkbox"/>	8	IPCAMERA	IP Camera	172.18.190.102	80	554	0
<input checked="" type="checkbox"/>	9	IPCAMERA	IP Camera	172.18.191.92	8081	554	0
<input checked="" type="checkbox"/>	10	IPCAMERA	IP Camera	172.18.191.93	8082	9092	0

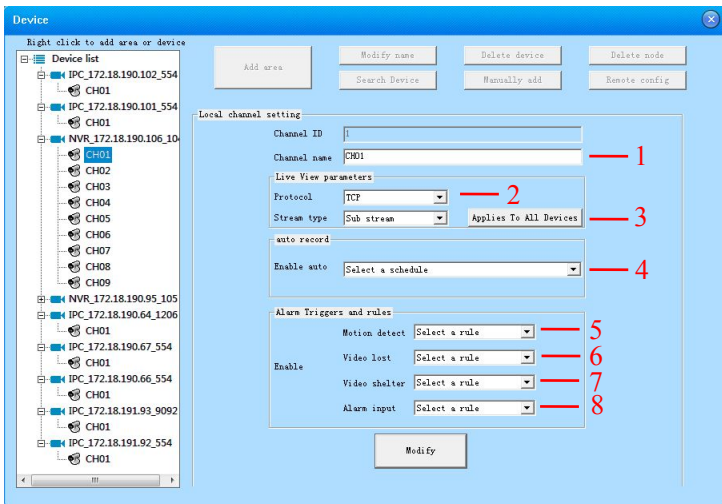
### 3.1.4 Front-end Device Parameter Settings Management

Click the device name in the device management, as the below picture:



You can modify the parameters like Device Name, Port No., and User Name/Password etc. The default port No. is 554, and the default http port No. is 80.

Click the channel in the device management, as the below picture:



1	Modify the channel name	2	UDP/TCP Network transmission protocol choice
3	Channel data rate mode choice	4	Time of auto-record choice
5	Mobile detect plan choice	6	Video lost plan choice
7	Video mask plan choice	8	Alarm input plan choice

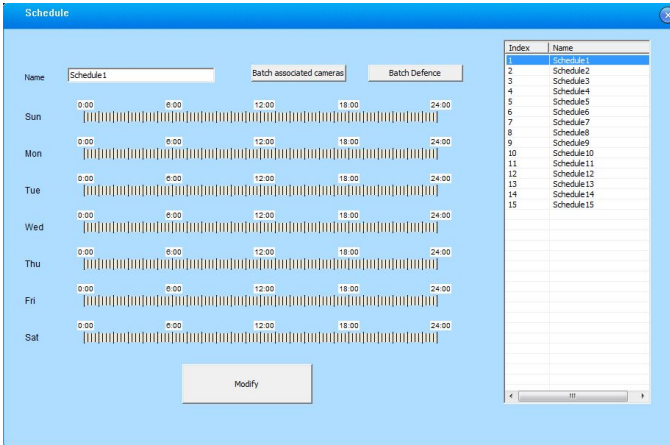
### 3.2 Schedule Configuration

Schedule is applied on the period of auto-record, you can choose the time to record by your own choice. The operation is like this:

First: Click the "Configuration Management", open the "Schedule Configuration" window .

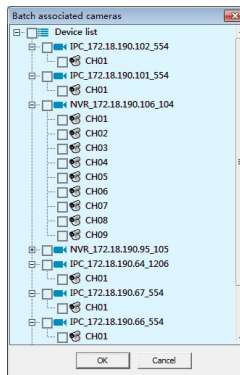
Second: Choose the time to record by your own will.





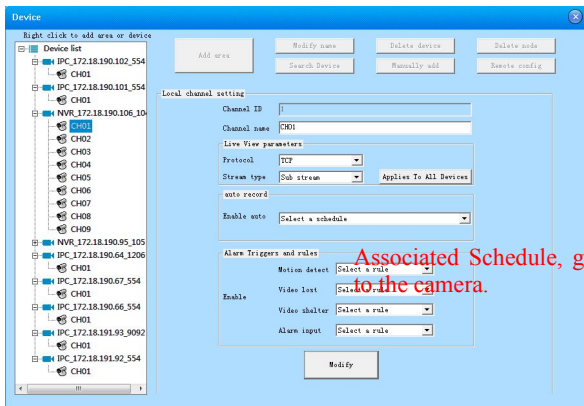
### Third: Schedule Associated Camera.

■ A Batch of associated camera, choose  , make the recording plan for the cameras.



■ Single camera associated schedule, open "device management", choose a video channel, and select the schedule to be set in "Auto-record" (If you chose the time regulation, the system will obey the regulation to record automatically)

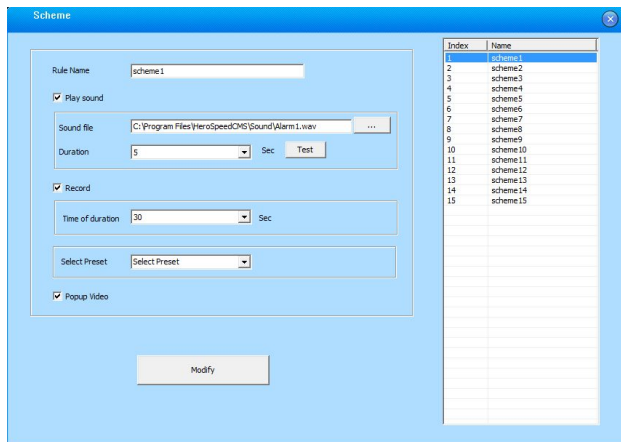
**Note:** This option is effective for preview video channel.



### 3.3 Alarm Linkage Plan Configuration

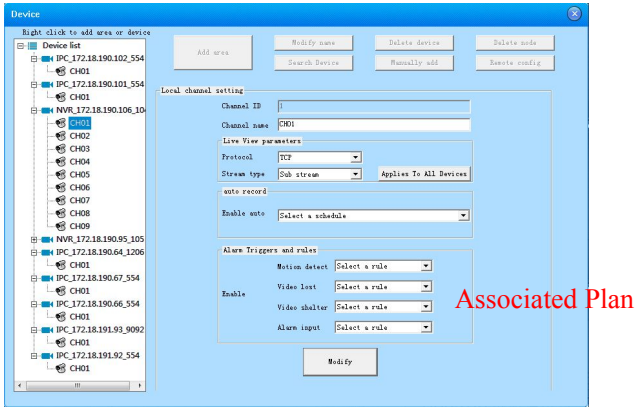
Alarm Linkage offers many alarm prompt methods, the operation is as below:

First: Click the "Configuration Management" on the menu bar, open "Linkage Plan Configuration" Scheme to install the alarm linkage.



- **Plan Name:** Modify the plan's name.
  - **Sound to Play:** Set the alarm ring, the computer will sound.(rank: 5~1200s)
  - **Record:** When it alarm, the camera will present red alarm and record. (rank: 5~3600s)
  - **Pop Video:** After the configuration, trigger the alarm, alarm window will pop out.
- Second: After finish, click the Modify to save the data.

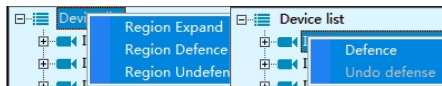
Third: Video channel associated plan, open "device management", and choose a video channel, manage the plan according with the alarm mode.



Forth: click Modify to save data, then PC will alarm according to the settings.

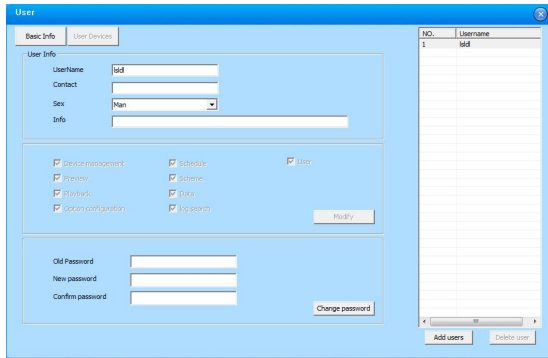
**Note:** This option is effective for preview video channel.

Users can choose to select the arming or disarming the alarm signal processing to front-end device, in the device list, right-click on the menu bar device node in the device tree, select "arm" to start monitoring the alarm device, if the device is in armed state, right-click the device node, click the "disarming" to cancel the alarm monitoring equipment. Right-click the zone nude and select "Zone Arm" or "Zone Disarm" for all devices can be operated under the zone. If the software has been carried out after arming alarm linkage set, when receiving an alarm signal, it will trigger the relevant linkage operation. Software restart, armed state will revert to the state before the shutdown.

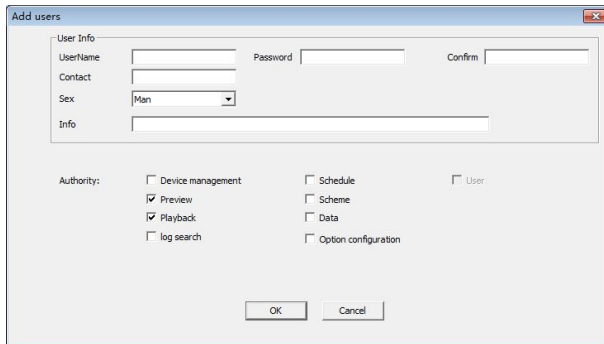


### 3.4 User Management

Enter the "Configuration Management" and click "User Management", now you can add or delete the users at your will, and manage the authority of the users as the below picture:



Click Add User, pop out the "Add users".



**Note:**

1. Add users, you should choose the appropriate authority for the user.

2. Authority Explanation:

Device Management: Add, delete or modify authority.

Schedule configuration: Recording Schedule change authority.

User management: add, modify, and delete user authority.

Network preview: video preview privileges.

Linkage plan configuration: configuration changes authority linkage plan.

Video replay: Playback of authority.

Configuration lead-in and lead-out: Are there configuration lead-in and lead-out rights.

Log Query: Are there any permission to check videos.

Configuration options: software selection (local configuration) permission.

## 3.5 Configuration Lead-in And Lead-out

### 3.5.1 Configuration Lead-in

Click "Configuration Management" on the menu bar; open the "Configuration Lead-in and Lead-out ", select "Data Lead-out" to lead-out the configuration file " SysConfig.conf " to the given content.

**Note:** " SysConfig.conf " cannot be modified, or the lead-in will fail.

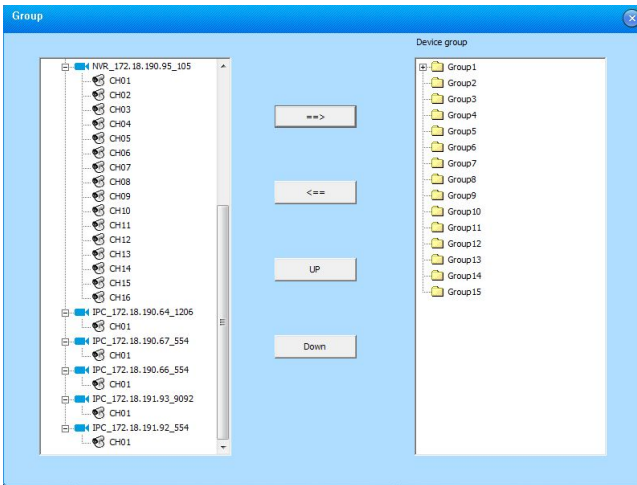
### 3.5.2 Configuration Lead-out

Click "Configuration Management" on the menu bar; open the "Configuration Lead-in and Lead-out ", select "Data Lead-out" and choose "SysConfig.conf" file. If succeeded, the data will be effective in the next restart of the Client.

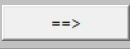
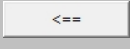
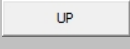
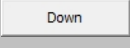
## 3.6 Group Management

The software supports polling group play and group play. Before the polling play, the device should be added and set well.

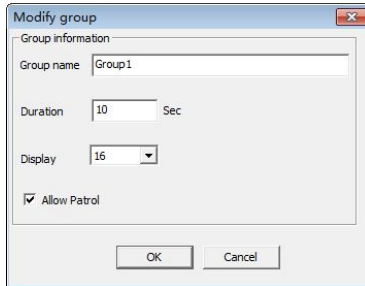
Click the Device Management; select the group management, as below picture:



The left side is the added device list, the right side group list, the four button's function is as below:

Button	Note
	Add the selected channel to one group
	Selected channel will be deleted from group. When you click a group name, click the button, and then the entire group will be emptied
	The channel Moves up to one position in the group, when the channel is at the top, the button is gray, and this function is unavailable
	The channel Moves down to one position in the group, when the channel is at the bottom, the button is gray, and this function is unavailable

The user Right-clicks group name in the pop-up menu, select "Edit Group", then dialog box pops up as follows.



This is the explanation to the box:

Option	Note
Device Group	User defines group name
Pause Time	Preview display time of the packet polling
Division Quantity	Show the total number of the split-screen when group play, the number is generally consistent with the total number of channels, the maximum is 36.
Polling permission	Select this option allows the group to participate in the given polling packet, the group must supports polling play.

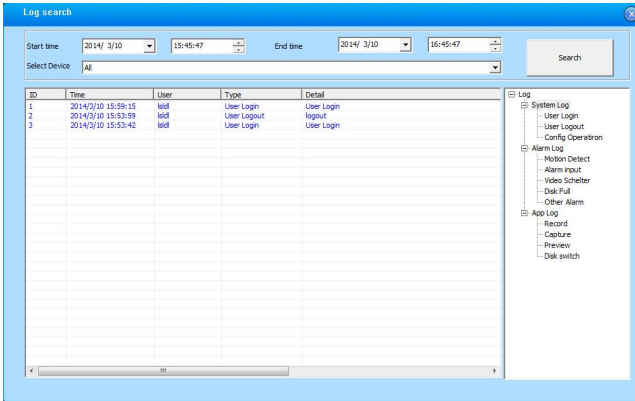
When you add a channel to a group, first need to click the group name to be added, then select the channel be added from the list of devices t, and then click . When you want to removed it from the channel group, first need to select the channel and then click , or right-click the channel name, then select "Delete channel" to delete the channel from the pop-up menu.

**Skill:** When user need to delete all channels under a group, just click the group name and then click , you can right-click the group name and then select "Delete Group" to empty a group in the pop-up menu.

# 4 Tools

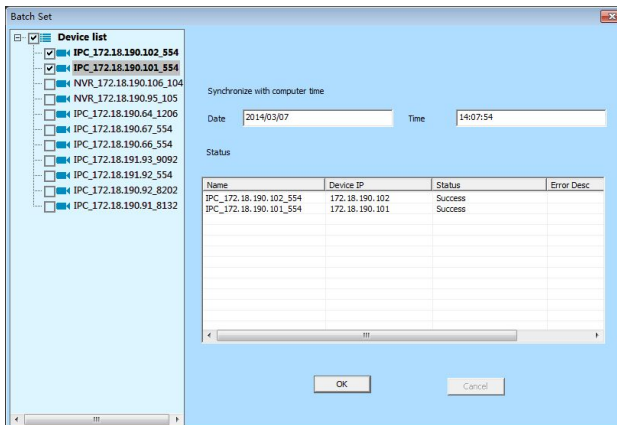
## 4.1 Log Management

Enter the "Tools" of menu bar and click "Log Query" interface, set the period of the log to be queried, select the mode and sub-mode of the log, click search, then the log will come out, as below picture:



## 4.2 Batch Setup

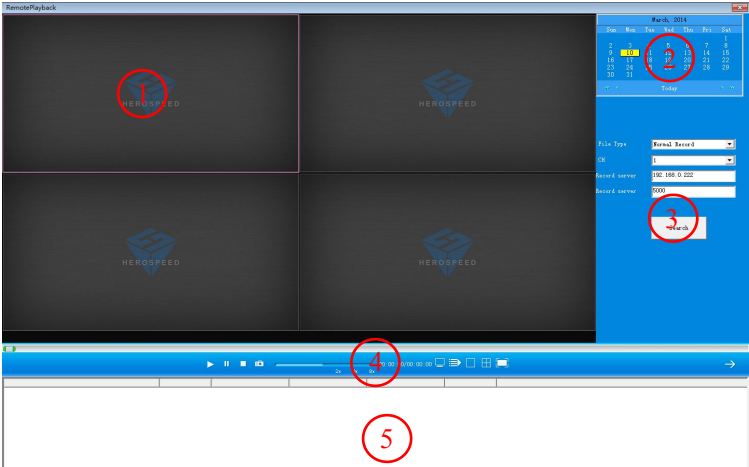
Enter "Tools" menu on the menu bar and click the "Batch Setup" interface, you can set the system time synchronized with local time, as below picture:





### 4.3 Remote Replay

Enter the "Tools" menu on menu bar and click "Remote Replay" on the pop-up interface, as shown in this screen, you can view the video stored in NVR device



Introduction to the Remote Replay Interface:

Zone	Note	Zone	Note
1	Remote Replay window	2	Select time of Remote Replay
3	Configuration zone of DVR	4	Control bar of playing
5	List of Search results		

#### 4.3.1 Remote Video Retrieval

First: Select the date to be played back;

Second: Select the desired channel playback;

Third: Fill NVR device's IP address;







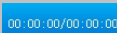




Forth: Fill NVR device TCP port;

Fifth: Click the Search button to retrieve NVR video files, if the channel video files exist on that day, the search results will appear in the search results list area.

At this time select a window, double-click the video to watch the video search results in the NVR device.

### 4.3.2 Remote Video Control

Introduction to the Remote Video Control:

Button	Function	Button	Function
	Play		Pause
	Pause		Single-frame playback
	Picture-shoot		Speed control
	Time		Screenshot storage path
	All stop		1&4 split scree
	Full screen		

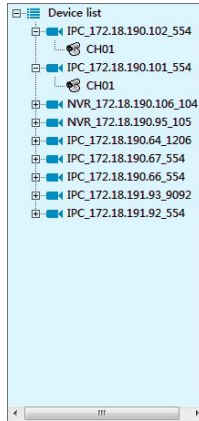
### 4.4 Version Information

The Version Information of CMS software is seen in the below picture:






# 5 Picture Preview

Click the device list of the main menu, it will show us the device list currently.



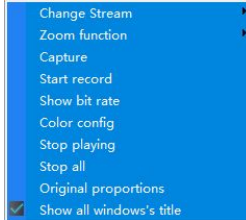
## 5.1 Watching Video

### 5.1.1 Free View Model

- **Double-click the channel to play:** Select one Play Window of the Video-viewing area, the channel will play in the Play Window. Under the Spilt Screen Preview Model, it will be shown as full screen when we double-click any preview frame and it will be restored when double-click again. The currently channel can be stopped by clicking the  on the top right corner.
- **Click the right key to play:** Select any play window of the video-viewing area, right key the channel of the device tree, and then select "Open to Preview", the channel will play in the play window.
- **Drag the channel to play:** Select any channel of the device tree then hold down the mouse and the channel will start playing when it is dragged to any play window in the view area.
- **Multichannel Preview:** Select the Picture-division LNK tool in the Picture-division and the Polling toolbar , the frame can be displayed in 1, 4, 8, 9, 13 and 16 channels.
- **Picture Zoom:** We can adjust the scaling of digital and number by clicking the button of zoom in and zoom out  in preview window. The scaling can be adjusted by rolling the roller under the model of Number zooming out.

### 5.1.2 Right Menu

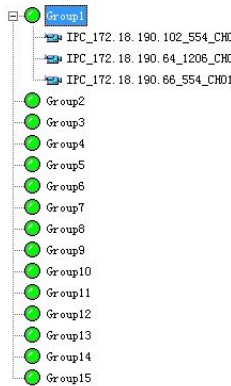
Select any play window in the video-viewing area, the user can do the following by right-clicking.



- **Stream Switching:** The main stream, stream 2 and stream 3 can be chosen to preview.
- **Picture zoom in:** Set the current channel as digital zoom in or number zoom in, the default is number zoom in.
- **Capture:** Capture the current time and the picture of the current channel, save it to the disk.
- **Start Recording:** Record the current channel and save it to the disk.
- **Stream:** Show the flow of the preview channel.
- **Color Set:** Make the color configuration of the current channel and the brightness, the contrast, the saturation and the sharpness.
- **Stop play:** Close the frame of all channel.
- **Show as original scale:** Zoom in pictures as the original scale.
- **Show the title bar of all windows:** Show the title bar of all windows.




### 5.1.3 Play In Groups

Click the " Device List ", show the device in groups.




- **Right-click the menu to play:** Select any play window of the view area. Then right-click any group of the device list to select " Play in groups ". The group will start to play the channel of it in turn.
- **Drag the play group:** Select a group in the group list, hold down the mouse button down, and drag it to view a play area in the window, the packet will change the playback window to start playing the packet channel in turn.

#### 5.1.4 Polling Play In Groups

- **Start polling:** Click the real-time panel  to switch the play model to " Polling view model ", then the software will polling all groups set as polling with permission in turn.
- **Polling Pause/Restore:** Click  in the real-time panel, the software will pause polling. After pause, the button will change into  "Polling Restore". Click the button again and it will restore the polling in groups.
- **Polling Finish:** Click the "Play Model" then select the "Free view model", it will finish polling.



### 5.2 Manual Capture And Record

#### 5.2.1 Manual Capture

- **Title capture:** Click the capture button  in title bar, it will capture the picture directly.
- **Right-click the menu to capture:** Right-click the play window, the context menu will be pop out, then select "Capture". It will show you " Capture Successful " .


Note: If the network environment is poor, have dropped the case the playback screen will appear the situation capture failure.

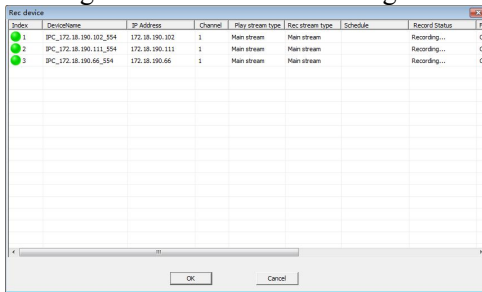
#### 5.2.2 Manual Record

- **Window Title Video:** Right-click the play window record button  in title bar, it will record the picture directly. At this time the record button becomes  , click again to stop recording. At the same time there will be a red screen "Rec" prompt.
- **Right-click the menu to record:** Right-click the play window, the context menu will be pop out, then select "Start record". The context menu will become checked, click again and the record can be stopped. It will show us "Start Record" and "Finish Record" when we start or finish recording.

# 6 LNK Tools

## 6.1 Status Of Record Channel


Select  in LNK tool bar of system and then enter the interface of record channel. It will show us the channel which is recording, the preview stream, the type of record channel stream, status of record channel, local save address and other messages. Shown as the following:

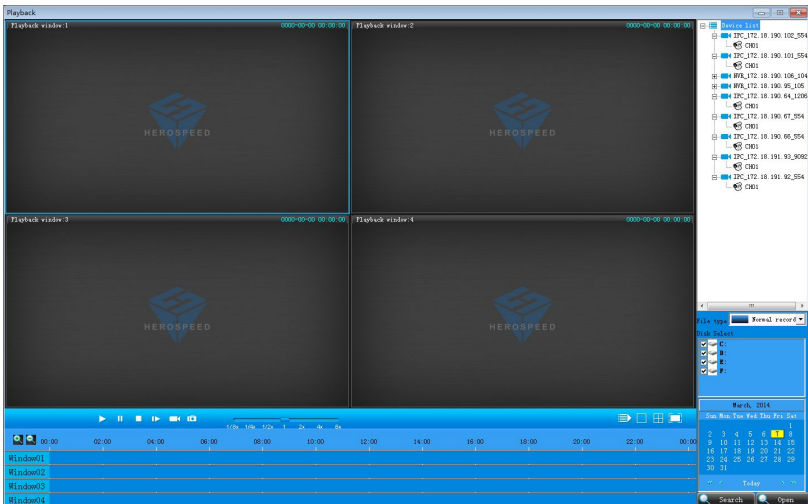


Index	Description	IP Address	Channel	Play stream type	Rec stream type	Schedule	Record Status	IP
1	IPC_172.18.190.102_354	172.18.190.102	1	Main stream	Main stream		Recording...	C:
2	IPC_172.18.190.111_354	172.18.190.111	1	Main stream	Main stream		Recording...	C:
3	IPC_172.18.190.66_354	172.18.190.66	1	Main stream	Main stream		Recording...	C:

## 6.2 Record Playback

### 6.2.1 Introduction Of Play Back Interface

Select  in LNK tool bar of system, then enter Record Playback Interface.

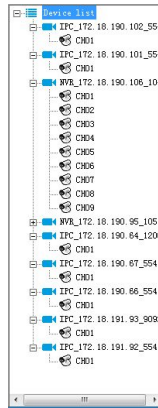


## Introduction of Playback Interface:

AREA	Introduction	区域	说明
1	List of device tree	2	Record Playback
3	Local record disk	4	Search Panel
5	Play-control bar	6	Timeline Panel

### 6.2.2 Record Search


Step 1: Select the window need to playback and then select the channel in device tree.

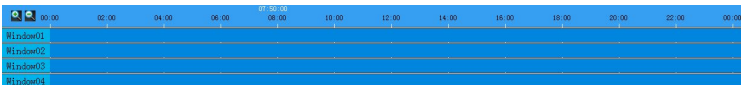


Step 2: Select the type of record file and the disk.

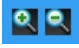
Step 3: Select search date.



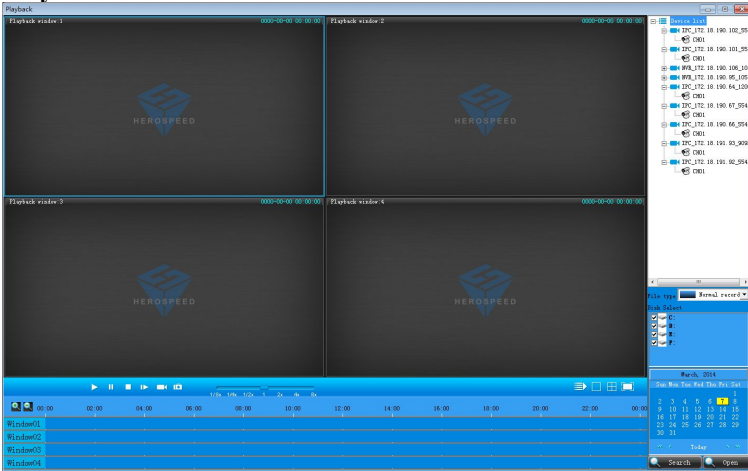
Step 4 Click  Search to search record file. Timeline will show us the time bucket. If there are some records in the time bucket, the timeline will act as blue. (Alarm record is red)









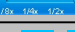



If there are some record files on some day, it will replay the record files from the earliest time.

Step 5: When move the mouse on the timeline, the panel will show the time point. Click it and positioning records. The display scale of timeline can be zoomed in or out by clicking  in timeline.


### 6.2.3 Playback Control



Introduction of Playback control bar is as the following:

Button	Function	Button	Function
	Play		Pause
	Stop		Playback Single Frame
	Edit		Capture
	Speed Adjustment		Full Stop
	Picture Division		Full Screen

### 6.3 Local Configuration

Monitoring Platform allow users to save in different disks. Click "Basic configuration"  on the LNK tool bar and open the basic configuration window to do it.



- **Software Configuration:** Manage the alarm log, operation log, failure of video-connection and AUTO Exec.
- **Route Configuration:** Set the route of remote download, capture and video-editing.
- **Record configuration:** Set the route of video storage. There are multi-choices to choose. When it is checked, the monitoring platform will record from the disk which remains the biggest free space. And when the free space is little than 1024M, it will record from the next disk as default.
- **Single disk reserved space:** The free space that single disk can remain.
- **Switch time of record:** Set the time of every video.(Range: from 10 to 60 minutes)
- **Operation of full disk:** Choose to finish recording or delete the earliest file.
- **Restore the status of preview:** When it is checked, the software will start to enter the preview status quit at last time automatically.
- **Capture Display:** Preview captures, pictures will be pop out.
- **Pop out the alarm window automatically:** When the device alarms, the window of alarm channel will pop out automatically.
- **Double click the main stream to preview:** Double click the window, we will preview pictures with the main stream.

**Basic configuration**

**Soft configuration**

Storage Days for Alarm Logs: 30      Auto re-connect times: always

Storage days for operation logs: 30       Auto run program after starting

**Path configuration**

Record download to: C:\CMS\Download      Select path

Image capture save to: C:\CMS\Capture      Select path

Record clip file save: C:\CMS\Cutdown      Select path

**Record configuration**

Select disk

Disk	Total size	Free size
<input checked="" type="checkbox"/> C:	40.83 GB	22.97 GB
<input type="checkbox"/> D:	97.66 GB	70.06 GB
<input type="checkbox"/> E:	156.26 GB	143.51 GB
<input type="checkbox"/> F:	183.01 GB	98.08 GB

Reserved space (single): 10240 MB

Switch time: 10 Min

Storage days for normal records: 30

Storage days for alarm records: 60

On disk full: Clear earliest

Stream type: Main stream


**Other configuration**

Save the preview window       Display the captured image       Popup Alarm Dialog

Double-click screen for primary stream

Save

## 6.4 Log out

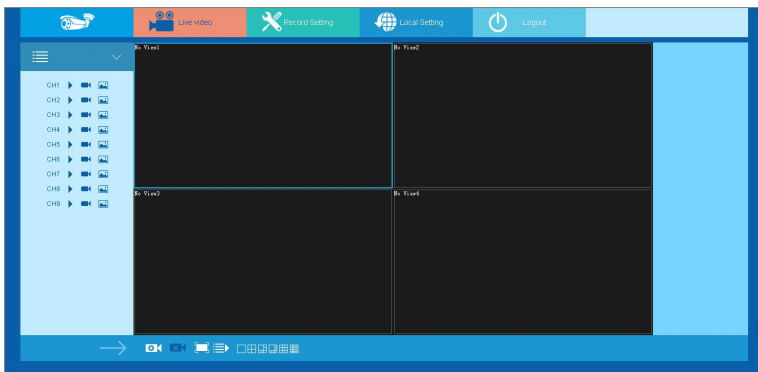
Select  in LNK tools bar of the system to enter log out interface. Users cannot log in the system unless the password is input.



# 7 Remote Configuration


Open "Device Management", select any device from the device list on the left, then right click to select the menu of remote configuration.

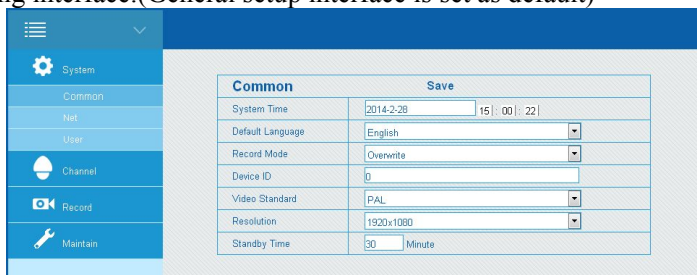
## 7.1 Interface of Remote Configuration



## 7.2 System Management

### 7.2.1 General Settings

Click the button  in tool bar, we can see the following interface.(General setup interface is set as default)



- **System time:** Date and time of NVR system.
- **Default language:** English and Chinese, the default system language is English.
- **Record Model:** When the disk is full of records whether it will cover the original data.
- **Device ID:** ID NO. of this device type.

- **VIDEO SYS:** NTSC or PAL.
- **Resolution:** The output resolution of NVR video is as the following 1024×768, 1280×720, 1280×1024, 1920×1080. The default is 1280\*720. The modify can be taken into effect with restarting the device.
- **Standby time:** Standby time of unmanned operation. If it is beyond 30 minutes and there is need to login again to operate NVR device. Default time is 30 minutes. Standby time can range from 1 to 120 minutes.
- **Save:** Save parameters being set of the current interface.

### 7.2.2 Internet Set

We can see the following interface when we click "Internet set" bar of system management.

Net		Save
Net Card	Eth1	
IP	172.18.190.106	
Mask	255.255.248.0	
GateWay	172.18.184.184	
TCP Port	8004	
Rtsp Port	104	
Http Port	8004	
DNS	172.18.184.184	
DNS2	202.96.128.68	
Broadcast	0.0.0.0	
MAC	BE-40-3F-A2-66-C9	

In this interface we can set the internet attribute of device, IP address, subnet mask, gateway and preferred domain server included. Make the internet configuration according to the actual situation.

### 7.2.3 User Management

Default user is the admin, password is 12345. We will see the following interface when we click "user management" of system management.

User		Save	
Exist User	admin	<input checked="" type="checkbox"/> PTZ Control	<input checked="" type="checkbox"/> Manual Recording
Operate	Modify	<input checked="" type="checkbox"/> Playback	<input checked="" type="checkbox"/> Parameter Setup
User	admin	<input checked="" type="checkbox"/> Query Parameters	<input checked="" type="checkbox"/> Advanced Config
Old Password		<input checked="" type="checkbox"/> Channel Parameters	<input checked="" type="checkbox"/> Channel Manage
Password		<input checked="" type="checkbox"/> Backup/Shutdown/Logout	
Confirm			

- **Edit:** Modify password or permission. Click "Modify" in the pull-down list of Controller Options. Select user name, input old password and new password and select permission. Then click "SAVE" to finish it.(PTZ control, manual record, playback, parameter set, parameter view, advanced operations, channel parameter, channel management and backup/power off/log out.)
- **Add:** Add new user. Select "add" in the pull-down list of "Operate" then input user name, password and permission. At last, click "Save" to save settings.
- **Delete:** Delete a user being set up.
- **Save:** Save the parameter of this current interface.

## 7.3 Channel Management

### 7.3.1 Channel Configuration

We will see the following interface when we click channel configuration in channel management.

No.	IP	Vendor Type	Channel No.	Port	Vendor Type
1	172.18.190.101	IPC	0	8999	ONVIF
2	172.18.190.112	IPC	0	8999	ONVIF
3	172.18.190.111	IPC	0	8999	ONVIF
4	172.18.190.63	IPC	0	8999	ONVIF
5	172.18.190.66	IPC	0	8999	ONVIF

In this section, we can set the parameters of IPC protocol type, preview stream, access protocol, user name, password, IP address, port and so on.

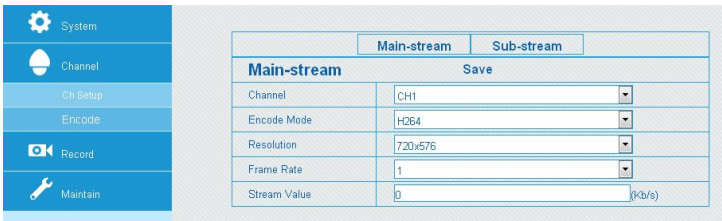
- **Channel:** Choice of NVR channel.2 choices can be selected. One is only one channel the other one is to all channels. The former should be selected when a single channel is set.
- **Protocol type:** ONVIF Protocol.
- **Preview Stream:** Default stream is sub-stream. It cannot be previewed normally unless TP-DCS of 2streams is the same as H.264.Resolution of sub-stream is D1 or CIF model.
- **Access Protocol:** TCP.

- **User name:** SynUser of IPC.(If the default SynUser is not the administrator, please change another one.)
- **Password:** Password of IPC.(If the default password is not the administrator, please change another one.)
- **IP address:** IP address of IPC in NVR.
- **Port:** Port of IPC. The default port is 8999.
- **Save:** Save the configuration being set of the current interface.

This software can remote configure all channels of NVR device. It will show us the IP of IPCAM connected to NVR by clicking the "SEARCH" button. Double click the IP address and save it. We can also input each configuration and save it manually.

### 7.3.2 Preview Configuration

We will see the following interface when Click the preview configuration of channel management.



- **Channel:** Choice of NVR channel.
- **TP-DCS:** H.264.
- **Resolution:** Preview resolution of the NVR main stream. There are 720×576, 1280×720, 1920×1080 can be chosen. The default is 1280×720.
- **Frame rate:** 1 to 30 can be chosen.
- **Bit Rate:** Bandwidth of the Main/Sub Stream of single channel.

### 7.4 Record Management

We will see the following interface when we click the "record set" in record management.

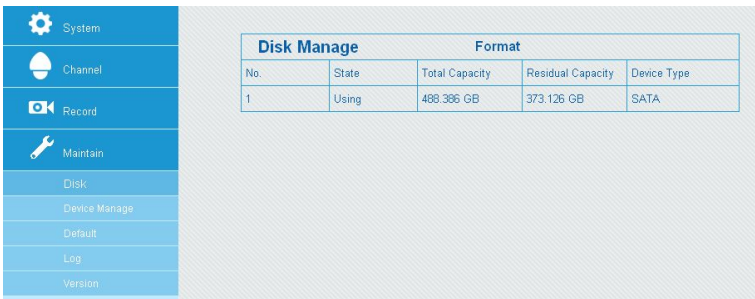


- **Channel:** Select the channel NO. to set record.(Uniform set, please select all)
- **Start Record:** Start Record. Default set is closed.
- **Week:** Select one day or every day to record in a week.
- **All Day:** Select it to record a whole day. Default set is closed.
- **Period:** Set four time buckets of every day.
- **Save:** Save configuration being set of the current interface.

## 7.5 System Maintenance

### 7.5.1 Disk Management

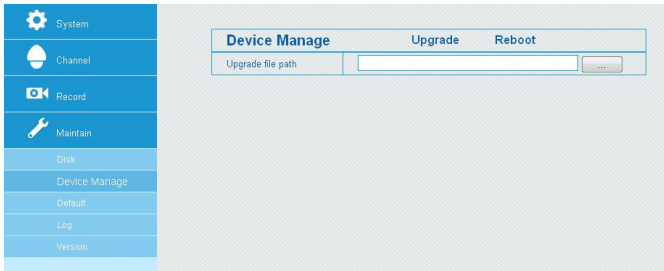
We will see the following picture when we click "Disk Management" of system maintenance.



It shows us the current disk information, like status, total capacity, free space and disk type.

### 7.5.2 Equipment Upgrade

We will see the following interface when we click "Equipment Upgrade" of system maintenance.



Firmware version and software version of the current system are given from the version.

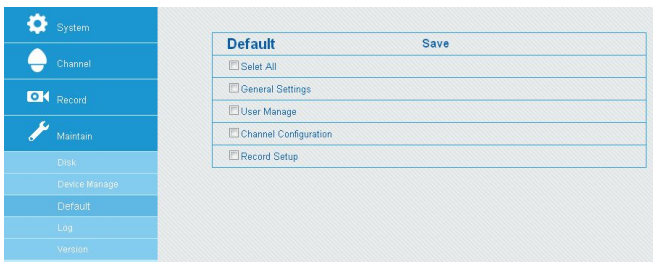
The user can upgrade the device through IE. With this function, users can upgrade the device file system. The method is 1<sup>st</sup> select the right upgrade patch through  2<sup>nd</sup> Click system upgrade and it will finish upgrading system and restart automatically.

**Introduction:** File system is a method and data structure to assure the file on the disk or partition. It is the method of organizing files on the disk. It can also be treated as disk or partition or file system type to save files. The software which is used for manage and save files in system is called file management system, file system in short.

**Notice:** During update, please do not pull up the power supply and cable.

### 7.5.3 Restore Default

The interface is shown as the following when we click "restore default" in system maintenance.

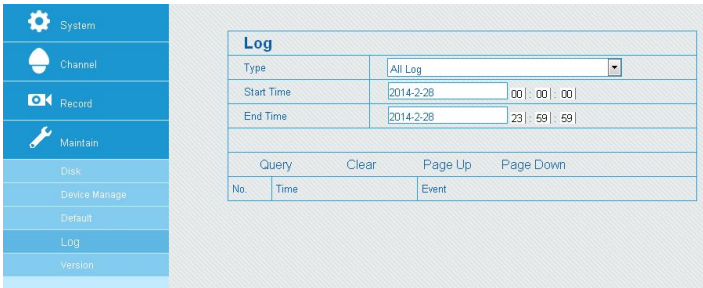


- **Factory Reset:** It will clear custom setup and make the device to factory reset. General settings, user management, channel configuration and record set can be set.
- **Save:** Save configuration of the current interface.



### 7.5.4 Blog Info

We will see the following interface when click "disk management" of system maintenance.



- **Device restart:** Restart the device.
- **Factory reset:** Clear all custom set and then restore the device set to defaults.

### 7.5.5 Version

We will see the following interface when we click "Version" of system maintenance.



Firmware version and software version of the current system are given from the version.